



MACNAUGHT®



M SERIES POSITIVE DISPLACEMENT FLOWMETERS

MACNAUGHT®

Macnaught manufactures a range of fully positive displacement flow meters utilising the time proven oval gear principle. This style of meter offers extremely high accuracy (better than +/- 0.5% of reading), unaffected by viscosity (< 1 to > 1,000,000) with low pressure loss. The meters are available in a range of construction materials, port types and can be supplied with ancillary accessories including mechanical and electronic displays. One of the major advantages of the M Series meters is low maintenance and the ability for on site repairs when needed. The range includes meters with flows as low as 0.5 litres per hour and as high as 733 litres per minute. Each meter is supplied with a calibration certificate showing meter accuracy.



Macnaught Industries was established in 1964 in response to the needs of Australian manufacturers for accurate metering and control of liquids.

Today's product is the result of continued development aimed at supplying the best possible meter for each application. Macnaught is able to provide creative solutions and develop customised products where needed.

Macnaught Industries is dedicated to a policy of providing clients with exceptional levels of support, service, engineering backup and the highest quality.



M05 • M1 • M2

Flow:	0.5 ~ 50/1 ~ 100/15 ~ 500 LPH (> 5cps)
Materials:	Body: Aluminium/PPS/316L Stainless Steel Rotors: 316L Stainless Steel Bushings: Sapphire/Zirconia/Bronze
Port Size:	¼" BSP(F) or NPT(F)
Pressure Ratings:	500kpa - 75psi/1,000kpa - 150psi/5,500kpa - 800psi/55,1600kpa - 8,000psi
Temperature:	80°C or 120°C
Viscosity	1,000cps Maximum (M2 with HV rotors >1,000cps)
Model Types:	Pulse, Encoder(M2), Liquid Crystal Display



M4

Flow:	1 ~ 30 LPM (> 5cps)
Materials:	Body: Aluminium/316L Stainless Steel Rotors: 316L Stainless Steel / PPS Bushings: Carbon
Port Size:	½" BSP(F) or NPT(F)
Pressure Ratings:	5,500kpa - 800 psi (pulse version) 3,400kpa - 500psi (mechanical version)
Temperature:	80°C or 120°C
Viscosity	1,000cps Maximum (with HV rotors >1,000cps)
Model Types:	Pulse, Encoder, Liquid Crystal Display, Mechanical (Digital)



M7

Flow:	3 ~ 80 LPM (> 5cps)
Materials:	Body: PPS Rotors: PPS Bushings: PPS
Port Size:	1" BSP(F) or NPT(F)
Pressure Ratings:	1,000kpa - 150psi
Temperature:	80°C
Viscosity	1,000cps Maximum
Model Types:	Pulse, Liquid Crystal Display



M10

Flow: 6 ~ 120 LPM (> 5cps)
 Materials: Body: Aluminium/316L Stainless Steel / Bronze
 Rotors: 316L Stainless Steel / PPS
 Bushings: Carbon / PPS
 Port Size: 1" BSP(F), NPT(F), ANSI 150lb, DIN16, JIS10, Tri Clover
 Pressure Ratings: 5,500kpa – 800psi (3,450kpa – 500psi mechanical version)
 Temperature: 80°C or 120°C
 Viscosity: 1,000cps Maximum (HV rotors >1,000cps)
 Model Types: Pulse, Encoder, Liquid Crystal Display,
 Mechanical (Digital or Analogue)



M40

Flow: 10 ~ 250 LPM (> 5cps)
 Materials: Body: Aluminium/316L Stainless Steel / Bronze
 Rotors: 316L Stainless Steel / PPS
 Bushings: Carbon / PPS
 Port Size: 1 1/2" BSP(F), NPT(F), ANSI 150lb, DIN16, JIS10, Tri Clover
 Pressure Ratings: 1,800kpa – 260psi
 Temperature: 80°C or 120°C
 Viscosity: 1,000cps Maximum (HV rotors >1,000cps)
 Model Types: Pulse, Encoder, Liquid Crystal Display,
 Mechanical (Digital or Analogue)



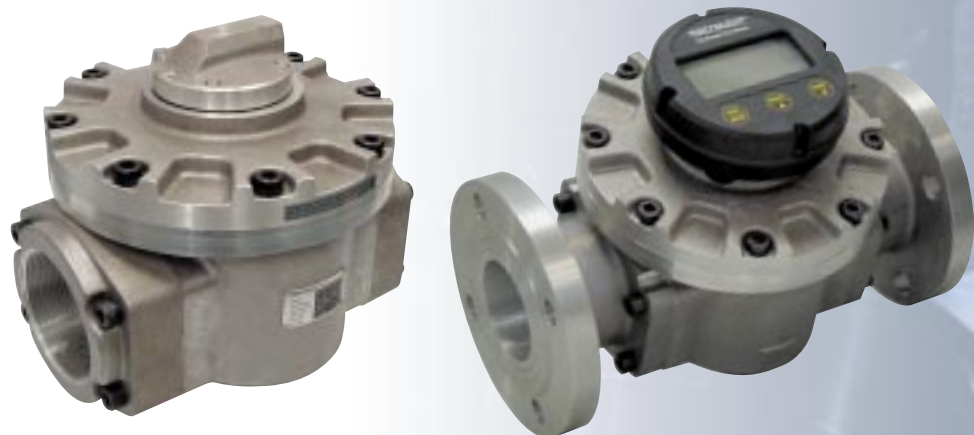
M50

Flow: 15 ~ 350 LPM (> 5cps)
 Materials: Body: Aluminium/316L Stainless Steel
 Rotors: 316L Stainless Steel / PPS
 Bushings: Carbon / PPS
 Port Size: 2" BSP(F), NPT(F), ANSI 150lb, DIN16, JIS10, Tri Clover
 Pressure Ratings: 1,800kpa – 260psi
 Temperature: 80°C or 120°C
 Viscosity: 1,000cps Maximum (HV rotors >1,000cps)
 Model Types: Pulse, Encoder, Liquid Crystal Display,
 Mechanical (Digital or Analogue)



M80

Flow: 33 ~ 733 LPM (> 5cps)
 Materials: Body: Aluminium
 Rotors: Aluminium
 Bushings: Bronze
 Port Size: 3" BSP(F), NPT(F), ANSI 150lb
 Pressure Ratings: 1,200kpa – 175psi
 Temperature: 80°C or 120°C
 Viscosity: 1,000cps Maximum
 Model Types: Pulse, Liquid Crystal Display,
 Mechanical (Analogue)



						
STANDARD DISPLAY <ul style="list-style-type: none"> Liquid Crystal Display 7 x 17mm Digits 11 x 8mm Digits Total / Reset Total / Rate 7 Year Battery Life Meter or Remote Mount IP65 Protection 	DELUXE DISPLAY <ul style="list-style-type: none"> Liquid Crystal Display 7 x 13mm Digits Total / Reset Total / Rate Batching Facility 1 Year Battery Life Meter or Remote Mount IP54 Protection Silicon Protection Boot Option 	MECHANICAL REGISTER DIGITAL <ul style="list-style-type: none"> Roller Wheel Total 6 Digits Reset Total 4 Digits Reset – Push Button 	MECHANICAL REGISTER ANALOGUE <ul style="list-style-type: none"> Revolving Pointer 10L or 100L 150mm Diameter Dial Total 6 Digits Reset Total 4 Digits Pulsar Option 	C500 DISPLAY <ul style="list-style-type: none"> Liquid Crystal Display 8 x 11mm Digits Total or Reset Total / Rate 5 Year Battery Life Meter or Remote Mount IP55 Protection 	A500 PULSE TO ANALOGUE CONVERTER <ul style="list-style-type: none"> Reed Switch Input 4 – 20mA Output Loop Powered Device Meter or Remote Mount Output Pulse 	A110 RATE TOTALISER <ul style="list-style-type: none"> Liquid Crystal Display 7 x 17mm Digits 11 x 8mm Digits Total / Reset Total / Rate 7 Year Battery Life Scaled Pulse Output 4 – 20mA Analogue Output Fully Programmable IP65 Protection

HAZARDOUS AREA CERTIFICATIONS

M10/M40/M50
Explosion Proof Certification
SAA Ex d IIB T6 IP66 Class 1 Zone

Standard Display
Kema EEx ia IIB/IIC T4

Deluxe Display
PTB EEx ia IIC T6

STANDARDS AUSTRALIA
Flameproof Approval 

CE MARKINGS

Directive 89/336/EEC

Standard Display
Deluxe Display

Pressure Equipment Directive
97/23/EC
All Meters

CALIBRATION CERTIFICATE



MACNAUGHT®

HEAD OFFICE: SYDNEY

41-49 Henderson Street, Turrella, NSW, 2205, Australia

Telephone: (02) 9567 0401 • International Telephone + 61 2 9567 0401
Facsimile: (02) 9597 7773 • International Facsimile + 61 2 9597 7773

E-mail: sales@macnaught.com.au • www.macnaught.com.au

Distributed By:



Quality
Endorsed
Company
ISO 9001 Lic 8602
Standards Australia