

## **USER'S GUIDE**

Installation & Operation  
Instructions

# **DFM2 DOPPLER FLOW METER**

## Introduction

The Flowmetrix DFM2 Flow Meter measures the velocity of fluids in pipelines using a totally non-intrusive principle.

The DFM2 utilises a high speed, 16-bit microprocessor unit with 32-Kbyte FLASH memory. The user-friendly flowmeter comes with a range of features to ensure easy and reliable flow measurement. The flow signal from the flow sensor is continuously analysed and should the signal quality become unacceptable an error message is displayed.

Standard features include an isolated 4 – 20mA output signal, an isolated pulse output and a relay output.

It is designed for use with sewage, waste water, pulp stock, mining slurries, food products and other fluids which contain in excess of 0,1% suspended solids or bubbles. The particle size for successful operation must be greater than 100 microns.

## Available configurations

The DFM2 sensor cable is 3 metres in length. The model DFM2-1 is designed to accept the flow signal directly from the sensor, and the flowmeter must be mounted within 3 metres from the sensor. The model DFM2-2 is supplied with an in-line amplifier. The 3 metre sensor cable is supplied connected to the in-line amplifier, and a is used to connect the in-line amplifier to the flowmeter.

## Sensor mounting

### Location

- Select a location for mounting the sensor at a point where the flow profile is fully developed. Generally the principle of 10 pipe diameters of straight pipe upstream, and 5 pipe diameters downstream will suffice, but should valves or bends exist upstream of the sensor, the amount of straight pipe immediately upstream will need to be increased.
- Ensure that the sensor is mounted as far as possible from potential noise sources, such as pumps, control valves etc. and mount the sensor at approximately 3/9 o'clock on the pipe (if horizontal) to avoid errors due to air pockets on top, or sediment at the bottom of the pipe.
- Either vertical or horizontal pipe runs are acceptable for sensor mounting.

### Surface preparation

- Before attaching the transducer head to the pipe surface, an area slightly larger than the flat surface of the transducer must be cleaned to bare metal. (A small amount of pipe pitting, even with spots of paint or rust, will not cause problems).

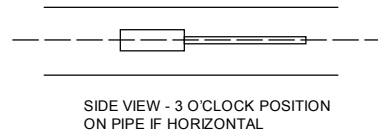
# FLOWMETRIX SA cc

## DFM2 Doppler Flow Meter

Doc Date: 23/03/07

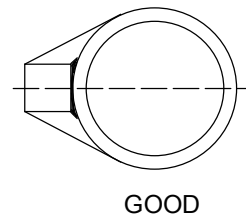
### Orientation

- The transducer must be mounted accurately, parallel to the pipe axis, for correct performance, and transducer to pipe contact should be along the centre line of the transducer head.



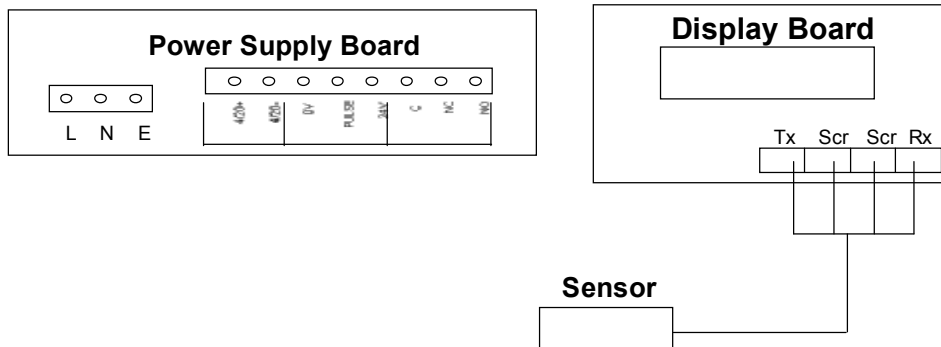
### Bonding

- Bonding to the pipe is achieved with silicone coupling compound. Be sure to fill in any air gaps that may remain at the pipe transducer interface with additional compound.
- A pipe clamp kit is included with the flow meter. It includes silicone coupling compound, a Neoprene rubber pad, and straps for pipe diameters up to 300 mm. In applications with excessive vibration it is recommended that the Neoprene rubber pad is inserted between the pipe and the transducer. Coupling compound must be applied to both sides of the pad.



### Wiring Diagram

#### DFM2-1

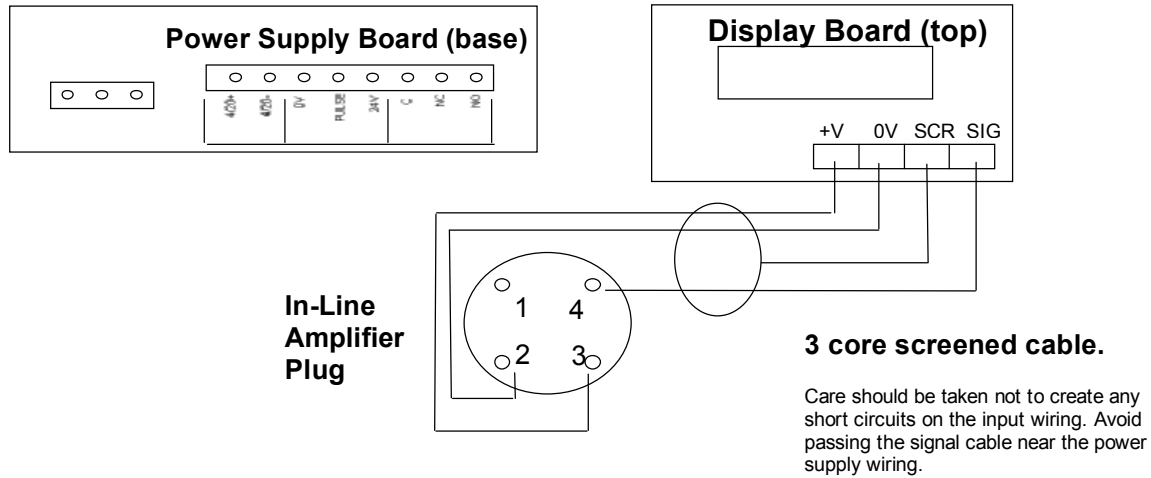


# FLOWMETRIX SA cc

## DFM2 Doppler Flow Meter

Doc Date: 23/03/07

### DFM2-2



### Output Functions

- The 4 – 20mA output signal is proportional to the flow rate. The full-scale value (ie. 20mA) is the flow rate figure programmed into menu item M1\_2.
  - The pulse output signal is either a 24V pulse available between the '24V' terminal and the 'PULSE' terminal, or an open collector output between 'ISOGND' terminal and the 'PULSE' terminal.
- N.B.** The width of the pulse is selectable in menu item M2\_5, however, if the pulse rate exceeds 1, 33 pps, the pulse output will change to an output with equal mark-space ratio.
- The function of the relay is selectable from menu item M2\_6.
    1. relay off- the relay is disabled.
    2. tot output- the relay operates each time the totaliser counts the selected number of counts.
- N.B.** The relay will not operate if the count rate is >1, 33 times per second.

<u>Totaliser counts</u>	<u>Pulse-factor</u>
1	1.00
10	0.10
100	0.01

3. flow alarm - the relay can be set to operate in a window between 'lo – alarm' and 'hi – alarm' with this option. The flow rate settings for these alarms are programmed into menu item M1\_3 and M1\_4 respectively.
4. signal loss - the relay is set to operate if the doppler signal is lost with this option.

# FLOWMETRIX SA cc

## DFM2 Doppler Flow Meter

Doc Date: 23/03/07

### Keypad System

The DFM2 has a 4-button programming system.

- The MENU button (M) is used to scroll through the menu structure.
- The SAVE button (S) is used to save entered changes to the flowmeter programme.
- The ► and ▲ buttons are used to change numbers and scroll through options.

### Menu System

The DFM2 menu system is easy to use and designed for programming simplicity.

With the DFM2 powered up the DFM2 will test the suitability of the flow signal. If the signal is suitable the flow total and flow rate are displayed, if not an error message is displayed.

<p><b>0000000 It</b> <b>3.9768 l/s</b></p>
------------------------------------------------

All set-up requirements are contained in the menus, and each item is stepped to by pressing the **M** button. **N.B.** The new data is only accepted if the 'save & exit' instruction is executed.

### START PROGRAMMING - Press "MENU"

#### Main Menu

The Main Menu consists of **Password?**, **Change?**, **Units?**, **Menu-1**, **Menu-2**, (*Cal mode hidden menu*) and **Save & exit**.

<p><b>Password?</b> <b>****</b></p>
-----------------------------------------

Enter the required password. The flowmeter is shipped with the password 1000. (Default password = 1942). The set-up can be viewed without the password, however, no changes can be saved at the Save & exit menu item and the error message "wrong password" is displayed.

Press ► repeatedly until cursor is under digit to be edited

Press ▲ repeatedly until desired value is displayed and **M** to continue

<p><b>Change ?</b> <b>1000</b></p>
----------------------------------------

Providing the correct password was entered, a new password can now be entered. Enter the required password.

Press ► repeatedly until cursor is under digit to be edited

Press ▲ repeatedly until desired value is displayed

Press **M** to continue

## FLOWMETRIX SA cc

## DFM2 Doppler Flow Meter

Doc Date: 23/03/07

<b>Units?</b> <b>Metric</b>
--------------------------------

Metric and English units of rate and total measurement are available.  
 Press ▲ until desired value is displayed and **M** to continue.

<b>Menu-1</b> <b>M-cont S-enter</b>
----------------------------------------

Press **S** to enter or **M** to continue

<b>Menu-2</b> <b>M-cont S-enter</b>
----------------------------------------

Press **S** to enter or **M** to continue

<b>Cal mode</b> <b>M-cont S-enter</b>
------------------------------------------

Press **S** to enter or **M** to continue (Cal mode is a hidden menu)

<b>Save &amp; exit</b> <b>M-cont S-yes</b>
-----------------------------------------------

Press **S** to save and exit or **M** to continue

**MENU-1 Flow Data**

<b>M1_1 rate units</b> <b>l/s</b>
--------------------------------------

Press ▲ repeatedly until desired units are displayed and **M** to continue

<b>M1_2 max flow</b> <b>100 l/s</b>
----------------------------------------

Enter the maximum flow rate at which to output 20mA  
 Press ► repeatedly until cursor is under digit to be edited  
 Press ▲ repeatedly until desired value is displayed and **M** to continue

<b>M1_3 lo_alarm</b> <b>20 l/s</b>
---------------------------------------

Press ► repeatedly until cursor is under digit to be edited  
 Press ▲ repeatedly until desired value is displayed and **M** to continue

<b>M1_4 hi_alarm</b> <b>100 l/s</b>
----------------------------------------

Press ► repeatedly until cursor is under digit to be edited  
 Press ▲ repeatedly until desired value is displayed and **M** to continue

## FLOWMETRIX SA cc

## DFM2 Doppler Flow Meter

Doc Date: 23/03/07

<b>M1_5 total units</b> <b>m<sup>3</sup></b>
-------------------------------------------------

Select the unit you wish to totalise.

Press **▲** to select the option required and **M** to continue

<b>M1_6 clr total?</b> <b>save tot</b>
-------------------------------------------

Select to clear the existing flow total or to keep existing flow total

Press **▲** to select option required and **M** to continue

<b>M1_7 damping</b> <b>0.25 Sec</b>
----------------------------------------

1, 2.5, 5, 10, second damping settings are available

Press **▲** to select the required value and **M** to continue

<b>M1_8 cutoff</b> <b>2%</b>
---------------------------------

1%, 2%, 3%, 5% & 10% cutoff settings available

Select the level below which the DFM2 will output no flow

Press **▲** to select the required value and **M** to continue to **Main Menu**

### Menu - 2 Setup Data

<b>M2_1 pipe ID mm</b> <b>108.2</b>
----------------------------------------

Enter the I.D. of the pipe. **NB the actual pipe ID must be entered here, not a nominal figure eg a 150NB Schedule 10 pipe should be calculated as follows, PIPE OD – (2 x wt) ie 168.3 – (2 x 3.4) = 161.5mm and not 150mm (16% error).**

Press **▶** repeatedly until cursor is under digit to be edited

Press **▲** repeatedly until desired value is displayed and **M** to continue

<b>M2_2 sim % o/p</b> <b>100.</b>
--------------------------------------

The output current can be driven to any percentage of full scale by entering the desired value. This facility can be used for testing the mA loop.

Press **▶** repeatedly until cursor is under digit to be edited

Press **▲** repeatedly until desired value is displayed and **M** to continue

<b>M2_3 puls-factor</b> <b>1.00 pulse/unit</b>
---------------------------------------------------

0.01, 0.10 & 1.00 pulse/unit options are available where the units are those selected in **Menu 1\_5**.

Press **▲** to select and **M** to continue

**N.B.** The count rate of the totaliser is limited to 100 counts/second. Above this count rate an error message is displayed.

## FLOWMETRIX SA cc

## DFM2 Doppler Flow Meter

Doc Date: 23/03/07

<b>M2_4 puls-width</b> <b>20ms</b>
---------------------------------------

The output pulse width can be varied.

Press **▲** repeatedly until the desired value is displayed and **M** to continue

**N.B.** the pulse output will change to a frequency with equal on-off period for a pulse rate >1.33Hz

<b>M2_5 relay-opts</b> <b>relay off</b>
--------------------------------------------

The relay function is selectable.

1. relay off
2. tot output
3. flow alarm
4. signal loss

Press **▲** to select option required and **M** to continue.

### **Cal Mode (hidden menu)**

Cal mode is a hidden menu, for the setup of the current output and K factor for the DFM – 2. To access this menu, press and hold **M** immediately after Menu 2 until cal\_mode appears on screen.

<b>Cal Mode</b> <b>M-cont      S-enter</b>
-----------------------------------------------

Press **S** to enter.

<b>M3_1 set 4 mA</b> <b>750</b>
------------------------------------

Connect an accurate milliamp meter to the current output terminals

Select a value that drives the output to 4mA (approx. 750)

Press **▶** repeatedly until cursor is under digit to be edited

Press **▲** repeatedly until desired value is displayed

Press **M** to continue

<b>M3_2 set 20 mA</b> <b>3800</b>
--------------------------------------

Connect an accurate milliamp meter to the current output terminals

Select a value that drives the output to 20mA (approx. 3800)

Press **▶** repeatedly until cursor is under digit to be edited

Press **▲** repeatedly until desired value is displayed

Press **M** to continue

<b>M3_3 cal_factor</b> <b>1.</b>
-------------------------------------

Press **▶** repeatedly until cursor is under digit to be edited

Press **▲** repeatedly until desired value is displayed

Press **M** to continue

Continue pressing **M** until the **Save & exit** menu, then press **S** to save the entered values.

**NOTE:**

Changes that are made to values in the menu system will only be saved when accessing the **Save & exit** menu and the **S** button is pressed.

**Error/Warning Messages**

ERROR MESSAGE	ERROR	POSSIBLE SOLUTION
<ul style="list-style-type: none"> <li>poor signal</li> </ul>	<ul style="list-style-type: none"> <li>Poor signal</li> <li>Flow rate less than minimum flow rate of 0.25m/s</li> </ul>	<ul style="list-style-type: none"> <li>Inject air into line</li> <li>Increase flow rate</li> </ul>
<ul style="list-style-type: none"> <li>no signal</li> </ul>	<ul style="list-style-type: none"> <li>No signal</li> </ul>	<ul style="list-style-type: none"> <li>Establish flow</li> <li>Inject air into line</li> </ul>
<ul style="list-style-type: none"> <li>total error counts &gt; 100/s</li> </ul>	<ul style="list-style-type: none"> <li>Totaliser count-rate too high</li> </ul>	<ul style="list-style-type: none"> <li>Select more suitable total units</li> </ul>
<ul style="list-style-type: none"> <li>rate overflow</li> </ul>	<ul style="list-style-type: none"> <li>Rate &gt; 999 999</li> </ul>	<ul style="list-style-type: none"> <li>Select more suitable rate units</li> </ul>
<ul style="list-style-type: none"> <li>Lo&gt; hi alarm</li> </ul>	<ul style="list-style-type: none"> <li>Alarm settings incorrect</li> </ul>	<ul style="list-style-type: none"> <li>Re-enter alarm settings</li> </ul>

PROBLEM	POSSIBLE SOLUTION
<i>Meter reading lower than expected</i>	
<ul style="list-style-type: none"> <li>Source particles velocity not indicative of average velocity</li> </ul>	<ul style="list-style-type: none"> <li>Relocate sensor to a position where source particles are expected to be moving at the average velocity</li> </ul>
<ul style="list-style-type: none"> <li>Incorrect mounting of flow sensor</li> </ul>	<ul style="list-style-type: none"> <li>Remount sensor correctly</li> </ul>
<ul style="list-style-type: none"> <li>Programming error</li> </ul>	<ul style="list-style-type: none"> <li>Review all programmed entries</li> </ul>
<ul style="list-style-type: none"> <li>Flow rate lower than expected</li> </ul>	<ul style="list-style-type: none"> <li>Investigate possible causes and confirm flow rate independently</li> </ul>
<ul style="list-style-type: none"> <li>Insufficient particle size or concentration</li> </ul>	<ul style="list-style-type: none"> <li>Locate sensor at position where acceptable particle size or concentration is expected.</li> <li>Inject air into the line</li> </ul>

<b>Meter reading when there is no flow</b>	
<ul style="list-style-type: none"> <li>Local ultrasonic noise source</li> </ul>	<ul style="list-style-type: none"> <li>Relocate sensor or remove noise source</li> </ul>
<b>“Poor signal” displayed when flow exists</b>	
<ul style="list-style-type: none"> <li>Insufficient particle size or concentration</li> </ul>	<ul style="list-style-type: none"> <li>Locate sensor at position where acceptable particle size or concentration is expected.</li> <li>Inject air into the line</li> </ul>
<ul style="list-style-type: none"> <li>Sensor coupling to pipe poor</li> </ul>	<ul style="list-style-type: none"> <li>Remount sensor to pipe correctly</li> </ul>
<b>Meter reading higher than expected</b>	
<ul style="list-style-type: none"> <li>Programming error</li> <li>Flow rate higher than expected</li> </ul>	<ul style="list-style-type: none"> <li>Review all programmed entries</li> <li>Investigate possible causes and confirm flow rate independently</li> </ul>
<ul style="list-style-type: none"> <li>Particle velocity at sensor not indicative of average velocity</li> </ul>	<ul style="list-style-type: none"> <li>Relocate sensor to a position where source particles are expected to be moving at the average velocity</li> </ul>
<ul style="list-style-type: none"> <li>Incorrect mounting of flow sensor</li> <li>Local electrical noise</li> </ul>	<ul style="list-style-type: none"> <li>Remount sensor correctly</li> <li>Relocate sensor</li> </ul>
<b>Meter reading erratic</b>	
<ul style="list-style-type: none"> <li>Particle velocity at sensor not indicative of average velocity and erratic</li> </ul>	<ul style="list-style-type: none"> <li>Relocate sensor to a position where the velocity profile is expected to be suitable</li> </ul>

**Questions and Answers**

*The pipe vibrates. Will it affect the flow meter?*

Common vibration frequencies are far lower than the sonic frequencies used by the flow meter, and will not normally affect accuracy or performance.

*Will pipe corrosion affect accuracy of the flow meter?*

Yes. Rust, loose paint etc. must be removed from the outside of the pipe to provide a clean mounting area when installing a Doppler sensor. Severe corrosion/oxidation on the inside of the pipe may prevent the Doppler signal from penetrating into the flow. If the pipe cannot be cleaned, a spool piece should be installed for sensor mounting.

*What effect do pipe liners have on the flow meter?*

The air gap between loose insertion liners and the pipe wall prevent the Doppler signal from entering the flow. Better results can be expected with bonded liners such as rubber, epoxy or tar, however an on site test is recommended to determine if the application is suitable for a Doppler flow meter.

*Why is Doppler only recommended for liquids containing suspended solids or gases?*

The Doppler sensor transmits sound into the flow stream, which must be reflected back to the sensor to indicate flow velocity. Gas bubbles or suspended solids act as reflectors for the Doppler signal. As a guideline, Flowmetrix Doppler flow meters are recommended for liquids containing solids or bubbles with a minimum size of 100 microns and a minimum concentration of 100 ppm.

*Can the sensor be submerged in water?*

Yes, for short periods of time or by accident, but not for continuous operation. The sensor is constructed to withstand submersion without damage, but external liquid moving in contact with the sensor can be interpreted as flow and cause false readings.

*Can I change the length of the sensor cable?*

No. The DFM2 is supplied with a 3 metre sensor cable as standard. If a longer cable is required, the flowmeter must be ordered with the in – line amplifier option.

*Does the direction of flow matter for Sensor mounting?*

The DFM Doppler flow meter will measure and totalize flow in either direction. A check valve should be used in applications where backflow may occur.

## Warranty

*Flowmetrix SA CC warrants to the purchaser that the equipment to be delivered hereunder will be free from defects in materials, workmanship and title and will be of the kind and quality designated in the proposal.*

*The foregoing warranty is exclusive and in lieu of all other warranties whether express or implied including any warranty of merchantability or of fitness for a particular purpose.*

*Warranties other than the above will only be effective if written and signed by an officer of Flowmetrix SA CC*

*If within 1 (one) year from the date of delivery, the equipment delivered hereunder does not meet the warranties specified above, Flowmetrix SA CC shall thereupon correct such defects, at its sole discretion, either by repairing or by replacing the instrument in its entirety.*

*The costs of returning the equipment to Flowmetrix SA CC and for the repaired or replaced item being returned to the purchaser shall be for the account of the purchaser.*

*The liability of Flowmetrix SA CC is conditioned upon the equipment covered hereunder being handled, installed, operated, maintained, stored or used, as the case may be, in strict accordance with the written instructions or technical direction supplied by Flowmetrix SA CC, and is further conditioned upon the purchasers prompt written notice (within 30 days) to Flowmetrix SA CC of such defects.*

*Flowmetrix SA CC makes no warranties which extend to the items covered hereby due to improper handling, installation, operation, maintenance, storage or use; abnormal or undisclosed environmental conditions; or operating or use in an otherwise improper manner.*

*The liability of Flowmetrix SA CC to the purchaser, except as to title, arising out of the supplying of the equipment or its use, under this warranty article, shall not, in any case, exceed the cost of correcting defects in the equipment as herein provided and upon the expiration of the warranty described herein, all such warranty liability shall terminate. The foregoing shall constitute sole warranty remedy of the purchaser and the sole warranty liability of Flowmetrix SA CC.*

## Goods Return Procedure

Damaged or defective equipment should be returned to the supplier prepaid. Do not return goods until written authorisation to do so has been obtained. Returned goods must have accompanying them a letter stating the following:

- Your company name and order number
- The contact person at your company
- Serial number and name of product
- Description of damage and cause if known
- Nature of any repair attempted by the user
- Type of repair, replacement or adjustment requested

**FLOWMETRIX SA cc**

**DFM2 Doppler Flow Meter**

Doc Date: 23/03/07

ASA steel pipe schedules

			ANSI B36.19								ANSI B36.10			
DN	Outside diameter mm	NPS	Schedule											
			5S		10S		40S/STD		80S/XS		STD		XS	
			Wall thickness and weight kg/mm											
			mm	kg/m	mm	kg/m	mm	kg/m	mm	kg/m	mm	kg/m	mm	kg/m
8	10.3	1/8			1.24	0.28	1.73	0.37	2.41	0.48				
8	13.7	1/4			1.65	0.50	2.24	0.64	3.02	0.81				
10	17.2	3/8			1.65	0.64	2.31	0.86	3.20	1.12				
15	21.3	1/2	1.65	0.81	2.11	1.01	2.77	1.28	3.73	1.64				
20	26.7	3/4	1.65	1.03	2.11	1.3	2.87	1.71	3.91	2.23				
25	33.4	1	1.65	1.31	2.77	2.12	3.38	2.54	4.55	3.28				
32	42.2	1 1/4	1.65	1.67	2.77	2.73	3.56	3.44	4.85	4.53				
40	48.3	1 1/2	1.65	1.92	2.77	3.15	3.68	4.11	5.08	5.49				
50	60.3	2	1.65	2.42	2.77	3.99	3.91	5.51	5.54	7.59				
65	73.0	2 1/2	2.11	3.74	3.05	5.34	5.16	8.75	7.01	11.6				
80	88.9	3	2.11	4.58	3.05	6.55	5.49	11.5	7.62	15.5				
100	101.6	3 1/2	2.11	5.25	3.05	7.52	5.74	13.8	8.08	18.9				
100	114.3	4	2.11	5.92	3.05	8.49	6.02	16.3	8.56	22.6				
125	141.3	5	2.77	9.60	3.40	11.7	6.55	22.1	9.53	31.4				
150	168.3	6	2.77	11.5	3.40	14.0	7.11	28.7	10.97	43.2				
200	219.1	8	2.77	15.0	3.76	20.2	8.18	43.1	12.70	65.6				
250	273.0	10	3.4	22.9	4.19	28.2	9.27	61.1	12.70	82.7				
300	323.9	12	3.96	31.7	4.57	36.5	9.53	74.9	12.70	98.8				
350	355.6	14	3.96	34.8	4.78	41.9			9.53	82.5	12.70	109		
400	406.4	16	4.19	42.1	4.78	48.0			9.53	94.6	12.70	125		
450	457	18	4.19	47.4	4.78	54.1			9.53	107	12.70	141		
500	508	20	4.78	60.2	5.54	69.6			9.53	119	12.70	157		
	559	22	4.78	66.2	5.54	76.7			9.53	131	12.70	173		
600	610	24	5.54	83.7	6.35	95.9			9.53	143	12.70	190		
	660	26							9.53	155	12.70	206		
	711	28							9.53	167	12.70	222		
	762	30	6.35	120	7.92	149			9.53	179	12.70	238		
800	813	32							9.53	191	12.70	254		
	864	34							9.53	204	12.70	270		
	914	36							9.53	216	12.70	286		
	965	38							9.53	228	12.70	303		
1000	1016	40							9.53	240	12.70	319		
	1067	42							9.53	252	12.70	335		
	1118	44							9.53	264	12.70	351		
	1168	46							9.53	276	12.70	367		
	1219	48							9.53	288	12.70	383		
	1321	52							9.53	313	12.70	417		
	1422	56							9.53	339	12.70	449		
	1524	60							9.53	362	12.70	482		
	1626	64							9.53	387	12.70	514		

ANSI B36.10

**FLOWMETRIX SA cc**

**DFM2 Doppler Flow Meter**

Doc Date: 23/03/07

DN	Outside diameter mm	NPS	Schedule													
			10		20		30		40		60		80		120	
			Wall thickness and weight kg/mm													
			mm	kg/m	mm	kg/m	mm	kg/m	mm	kg/m	mm	kg/m	mm	kg/m	mm	kg/m
8	10.3	1/8	1.24	0.28					1.73	0.37			2.41	0.48		
8	13.7	1/4	1.65	0.50					2.24	0.64			3.02	0.81		
10	17.2	3/8	1.65	0.64					2.31	0.86			3.20	1.12		
15	21.3	1/2	2.11	1.01					2.77	1.28			3.73	1.64		
20	26.7	3/4	2.11	1.30					2.87	1.71			3.91	2.23		
25	33.4	1	2.77	2.12					3.38	2.54			4.55	3.28		
32	42.2	1 1/4	2.77	2.73					3.56	3.44			4.85	4.53		
40	48.3	1 1/2	2.77	3.15					3.68	4.11			5.08	5.49		
50	60.3	2	2.77	3.99					3.91	5.51			5.54	7.59		
65	73.0	2 1/2	3.05	5.34					5.16	8.75			7.01	11.6		
80	88.9	3	3.05	6.55					5.49	11.5			7.62	15.5		
100	101.6	3 1/2	3.05	7.52					5.74	13.8			8.08	18.9		
100	114.3	4	3.05	8.49					6.02	16.3			8.56	22.6	11.13	28.7
125	141.3	5	3.40	11.7					6.55	22.1			9.53	31.4	12.70	40.8
150	168.3	6	3.40	14.0					7.11	28.7			10.97	43.2	14.27	55.0
200	219.1	8	3.76	20.2	6.35	33.8			8.18	43.1	10.31	53.8	12.70	65.6	18.26	91.7
250	273.0	10	4.19	28.2	6.35	42.3	7.8	51.7	9.27	61.1	12.70	82.7	15.09	97.3	21.44	135
300	323.9	12	4.57	36.5	6.35	50.4	8.38	66.1	10.31	80.9	14.27	110	17.48	134	25.40	190
350	355.6	14	6.35	55.5	7.92	68.9	9.53	82.5	11.13	95.9	15.09	128	19.05	160	27.79	228
400	406.4	16	6.35	63.5	7.92	78.9	9.53	94.6	12.7	125	16.66	162	21.44	206	30.96	291
450	457	18	6.35	71.6	7.92	88.9	11.13	124	14.27	158	19.05	209	23.83	258	34.93	369
500	508	20	6.35	79.7	9.53	119	12.70	157	15.09	186	20.62	251	26.19	316	38.10	448
	559	22	6.35	87.8	9.53	131	12.70	173			22.23	298	28.58	379	41.28	534
600	610	24	6.35	95.9	9.53	143	14.27	213	17.48	259	24.61	360	30.96	448	46.02	649
	660	26	7.92	129	12.70	206										
700	711	28	7.92	139	12.70	222	15.88	276								
	762	30	7.92	149	12.70	238	15.88	296								
800	813	32	7.92	159	12.70	254	15.88	317	17.48	348						
	864	34	7.92	170	12.70	270	15.88	337	17.48	370						
900	914	36	7.92	179	12.70	286	15.88	357	19.05	426						
	965	38	9.53	228	12.70	302	15.88	377								
1000	1016	40	9.53	240	12.70	319	15.88	397								
	1067	42	9.53	252	12.70	335	15.88	417								
	1118	44	9.53	264	12.70	351	15.88	438								
	1168	46	9.53	276	12.70	367	15.88	458								
	1219	48	9.53	288	12.70	383	15.88	478								
	1321	52	9.53	313	12.70	416	15.88	518								
	1422	56	9.53	337	12.70	448	15.88	558								
	1524	60	9.53	361	12.70	480	15.88	599								
	1626	64	9.53	385	12.70	512	15.88	639								

The table shows a part of the ANSI B36.10 standard;  
some of these dimensions are outside AST's production programme.